

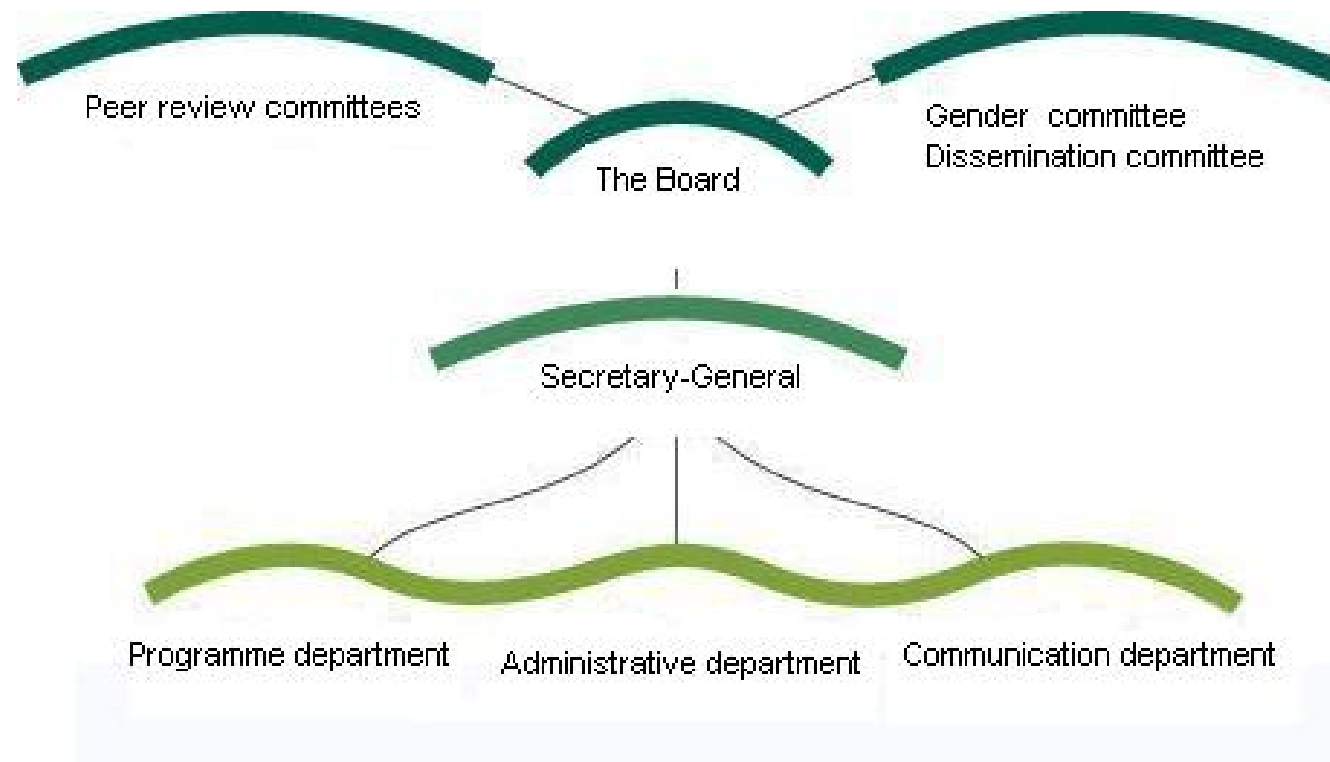


The Swedish Council for Working Life and Social Research supports and initiates basic and applied research with a view to improving our knowledge about working life, public health and welfare.

www.fas.se



FAS – Organisation





FAS – Organisation

- Activities are led by the Secretary-General. The Board consists of researchers and representatives of the public interest (12 members).
- The secretariat (23 employees) is tasked with assisting the Council's evaluation committees, the administration of grants, ongoing evaluations and analyses as well as dissemination and information



Main areas of research funding Skr 300 million annually

- Work and health
- Work organisations
- Labour market issues
- Public health
- Welfare and social policy
- Social services and social relations



FAS is responsible for co-ordinating Swedish research concerning

- Functional disabilities
- International migration and ethnic relations (IMER)
- The elderly
- Social science aspects of alcohol research
- Research on children and youth



Funding instruments

Research

Project grants
Programme grants
Centres of excellence
Research positions
Post-doc awards

Dissemination of knowledge

Networks
Conferences/symposia
Publication grants

Internationalisation

Travel grants
Scholarships for research and post-doc studies abroad
Grants for visiting researchers



Research information and FAS information activities

- The website and linked portals
- Newsletters
- Reports and popular science overviews
- Conferences and seminars
- Press contacts
- For more information on FAS and on research funded by FAS visit our English website www.fas.se/en



International

- FAS supports and stimulates international collaboration
- FAS is employing the services of international experts for evaluations
- FAS is a member of the European Science Foundation and is also part of other networks of research-funding agencies
- FAS is partner in three ERA-NETs; ERA-AGE and WORK-IN-NET and NEW OSH ERA



FAS EU policy

Goal:

It is our task to promote and initiate international research partnerships. We want to encourage and stimulate our scientists to lead and/or participate in European and global research collaborations and thereby:

- create research platforms
- enhance transfer of knowledge
- increase research funding from international resources
- increase research mobility



Main channels:

EU:s framework programmes, FP7

<http://cordis.europa.eu/fp7/>

- Workprogrammes to cover FAS:s areas
- Informing scientists about the possibilities in relevant workprogrammes
- Planning grants for Scientists that want to participate in FP7 projects



FAS "Planeringsbidrag" for EU-proposals, read more at www.fas.se

- Coordinator for a Cooperative projects, max 150 000 skr
- Leading partner in an application for a Cooperative projects, max 50 000 skr
- Coordinator for a Marie Curie-network, max 50 000 kr
- Marie Curie-postdoc (MC IEF, MC IOF) 10 000 kr



8. Socio-Economic Sciences and the Humanities

Activity 8. 3:

Major trends in society and their implications

Area 1: Demographic changes

- Demographic changes in the EU
- Birth rates across the EU
- Migration

Area 2: Societal trends and lifestyles

- Social exclusion of young people

Area 3: Cultural interactions in an international perspective

- Multiculturalism, diversities and traditions



Indicative topics for a forthcoming call:

Under 8.3.2:

- Family life
- Conditions of work and impact on quality of life
- Consumer behaviour and protection



ESF (European Science Foundation)

<http://www.esf.org/>

- ECRP program, an open call within the EUROCORES program for Social Science and Humanities
- EUROCORES programs
- ESF Research Network Program

ESF (European Social Fund)

http://ec.europa.eu/employment_social/esf2000/index_en.html

- FAS is participating in Monitoring committees

Other dedicated areas for International research collaborations,

- Asia/China